



EPA REGION 3

DELAWARE

MARYLAND

PENNSYLVANIA

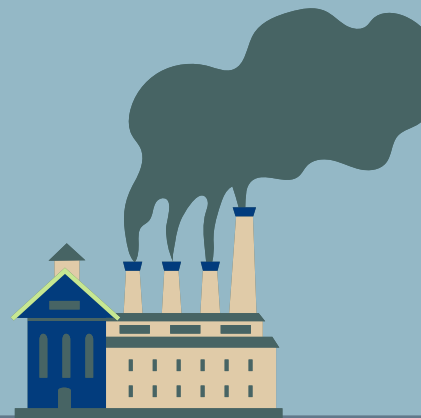
VIRGINIA

WEST VIRGINIA

WASHINGTON, D.C.

## What is technical assistance to Brownfields?

**Technical Assistance to Brownfields** is available through the EPA at no cost to stakeholders. This assistance is available throughout the brownfield redevelopment process and can include site identification, environmental site assessments (both Phase I and Phase II), visioning for redevelopment, and grant application review and support. Mid-Atlantic TAB is the technical assistance provider to EPA Region 3, which serves WV, VA, MD, PA, DE, and Washington D.C. Mid-Atlantic TAB is a collaboration among leading programs across the region and includes partners at West Virginia University, Virginia Tech, Marshall University and the University of Delaware.



## What types of assistance are available through the EPA?

### Targeted Brownfields Assessment (TBA)

- The U.S. EPA's TBA program works to help municipalities redevelop contaminated properties in their community.
  - This program provides funding for Phase I and II environmental site assessments (ESAs).
  - In order to be eligible for funding, the site *must* be currently or eventually publicly-owned. Eligible applicants include municipalities and/or quasi-public entities like redevelopment authorities or development corporations.
- Applications are accepted on a rolling basis and are non-competitive, unlike EPA grants. You should know within 1-2 weeks of submission whether or not the application is accepted!
- You can find more information on this process through this link:  
<https://www.epa.gov/brownfields/r3>

### Land-Revitalization TA

- U.S. EPA land revitalization (LR TA) can help communities determine what type of site reuse(s) is/are feasible.
- This program supplements brownfields grants and other TA provided by connecting communities with EPA contractors, who deliver services at no cost. These services include:
  - Developing, testing, advancing an innovative approach
  - Market analysis, labor market and economic research
  - Site reuse assessment; identify site assets & barriers
  - Financial feasibility and/or implementation plan for site reuse
  - Conceptual design for site reuse
  - Community engagement and brownfields reuse visioning
  - Funding/financing options, opportunities analysis, redevelopment strategy
  - Brownfield financing trainings and financing tool development
  - Sustainable site reuse practice(s)



EPA REGION 3

DELAWARE

MARYLAND

PENNSYLVANIA

VIRGINIA

WEST VIRGINIA

WASHINGTON, D.C.

## Technical Assistance FAQs

### Do I need a contractor for EPA-provided technical assistance?

Nope! Unlike U.S. EPA grants, which require competitive bidding processes, the EPA does the hard part for you and currently has contracting vehicles used to perform TBA assessments as well as LR and RD TA activities!

### How much TBA funding can you request?

TBA applications don't require/permit funding requests. Rather, you request the type of work that you want completed. This program assists with conducting assessments, *not* requesting funding. If you want to request funding or apply for an EPA grant, contact your TA provider to have a conversation!

### How do I request TA funding?

Contact a EPA Region 3 Project Officer to learn more about when LRTAs are available. The Project Officers will work with you to determine whether the site is eligible for an LRTA. EPA Region 3 LRTA Contact - Tish Corbett @Corbett.Patricia@epa.gov

### How do I find my TAB provider?

In EPA Region 3, your TAB provider is Mid-Atlantic TAB. Find more details on our website: <https://brownfields.wvu.edu/>

## When can I expect my Targeted Brownfields Assessment?

Since Targeted Brownfields Assessment (TBA) applications are based on rolling submission, the time that it takes to get your assessment started once the application is accepted varies. Unfortunately, not every Phase I and Phase II environmental site assessment (ESA) is identical. Thus, the time required to implement the TBA is difficult to determine, unlike EPA Assessment Grants, in which funding is awarded in October of each year.

Mind-Refresher! What are Phase I and Phase II ESAs?

**Phase I ESA:** Identifies the potential presence of environmental contaminants based on property and records searches.

**Phase II ESA:** Lab testing of site soil is conducted to identify the specific contaminant(s) and determine the level of contamination on the site.